



Outside In: Addressing Complex Trauma of Women and Girls in Detention

Wednesday, August 31, 2016

2:45 pm - 4:15 pm

National Sexual Assault Conference

Special Thanks

This project is supported by Grant No. 2011-TA-AX-K030, awarded by the **Office on Violence Against Women**, U.S. Department of Justice.



The opinions, findings, conclusions, and recommendations expressed in this webinar are those of the presenters and do not necessarily reflect the views of the Department of Justice, Office on Violence Against Women.



Presenters

Kim Jordan, MA

DIVAS Co-Coordinator
VT Network Against
Domestic and Sexual
Violence

Kira Krier, LICSW

DIVAS Co-Coordinator
VT Network Against
Domestic and Sexual
Violence

Linda McFarlane, LCSW

Deputy Executive Director
Just Detention International

Jessica Seipel

Senior Program Officer
Just Detention International

Boa Smith

Program Associate
Just Detention International



JDI's Mission

JDI is a health and human rights organization that seeks to end sexual violence in all forms of detention.



JDI's Core Goals

1. To hold government officials accountable
2. To change public attitudes about sexual violence behind bars
3. To ensure survivors get the help they need



Agenda

- I. Domestic and intimate partner violence in detention
- II. Working with girls in juvenile detention
- III. The DIVAS program
- IV. Advocacy from the inside
- V. Wrap up and discussion



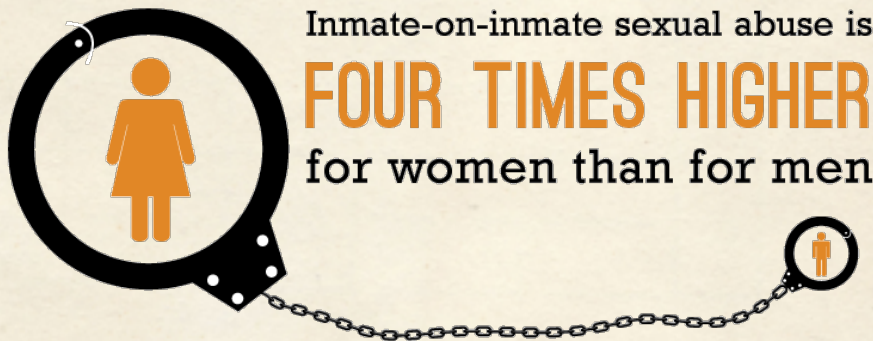
Ca'Linda

"I want people to know that I am the face of prisoner rape. A survivor, not a victim."

— Ca'Linda



Prevalence



Source: Bureau of Justice Statistics, *Sexual Victimization in Prisons and Jails Reported by Inmates, 2011–12*, May 2013. © Just Detention International



Prevalence



34% of female victims were sexually abused within the first **30 days** of incarceration



4% of those were within the first **24 hours**



Source: Allen J. Beck et al, *Sexual Victimization Reported in Prisons and Jails by Inmates, 2008-09* (Bureau of Justice Statistics, August 2010). © Just Detention International



Dynamics

Corrections facility culture facilitates abuse:

- Deprivation
- Code of silence
- Belief that women create drama
- Fear of punishment and retaliation



Dynamics

Perpetrators use the facility dynamics:

- Entrapment and debt
- Isolating and silencing
- Minimizing and lying
- Threats and punishment



Seeking Help

Barriers include:

- Not being taken seriously
- Invisibility and minimizing
- Guilt and shame
- Mischaracterization of abuser and survivors as mutual combatants



Survivor Letter

Yell for her and let her know what I was doing. It does not sound like me huh? I don't know what I've turned into B, but I hate myself. I've become so weak and so alone you would be so ashamed, I just want



You Can Help

Survivors need:

- Validation
- A compassionate listener
- Information about dynamics of abusive relationships
- Help planning for their safety
- Assurance that it won't always hurt this much

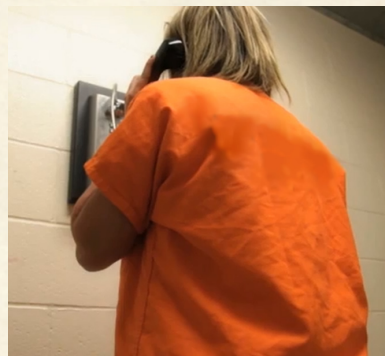


Girls in Youth Detention

- High rates of sexual trauma and multiple traumas
- Criminalization of trauma responses
- Disproportionate impact on girls of color
- Sexual abuse to prison pipeline

Common Triggers in Detention

- Lack of privacy
- Staff uneducated on trauma
- Standard operating procedures
- Little ability to make individual choices



Prevention and Intervention Together

- Different approach from prevention strategies in the community
- Focus is on complex trauma histories and the impact of incarceration
- Emphasis on prevention of re-traumatization

Tips: Working with Corrections Staff

- Be persistent — attend as many meetings as you can
- Frame your services as an asset
- Use the PREA Standards to your advantage



Photo: AP Photo, Pat Sullivan





DIVAS: DISCUSSING INTIMATE VIOLENCE AND ACCESSING SUPPORT

A Program for Incarcerated Survivors of Domestic & Sexual Violence at Chittenden Regional Correctional Facility South Burlington, Vermont

Kira Krier, LICSW ~ Kim Jordan, MA
DIVAS Advocacy, Education, and Support Co-ordinators

90% of women under Vermont DOC supervision have experienced physical and/or sexual abuse
(Vermont Network Against Domestic & Sexual Violence, 2014)

THE NEED FOR DIVAS: CRCF AT A GLANCE

- 90% of women under Vermont DOC supervision have experienced physical and/ or sexual abuse (Vermont Network Against Domestic & Sexual Violence, 2014)
- CRCF is Vermont's only women's correctional facility, originally designed as a detention center for short-term stays
- Currently serves as both a prison and jail for short-term and long-term inmates
- Reported Average stay is 60-90 days, although DIVAS also sees inmates with longer sentences
- Houses trans men and trans women on a case-by-case basis
- Average daily headcount is between 140-160 inmates

DIVAS INTERVENTIONS

Educational & Support Groups

- 4 groups/week, 50 weeks/year
- Evidence-based curricula: *Healing Trauma*, *Beyond Violence*, *Wholesome Bodies*
- Collaborations with local SV/DV agencies: Gender Circle, Bettering Relationships
- Original Groups based on inmate need and Coordinators' skill-sets: Healing Arts, Self-Compassion (upcoming: Arts and Exercise)
- Weekly Drop-In Group, Foxtrot Unit Group
- Facility-wide DVAM and SVAM programming and events such as DV 101, SV 101, Claim Your Voice, Comedy Night

Individual Advocacy

- Advocates are bound by Victim and Crisis Worker Privilege (VCWP)
- Voluntary participation; no inmate is mandated to seek DIVAS services

DIVAS INDIVIDUAL ADVOCACY INCLUDES:

- Information about sexual and domestic violence
- Crisis intervention and emotional support
- Connecting DIVAS participants with Victim Advocates from VT Network SV/DV agencies
- Re-entry support including connecting to community-based resources, safety planning, housing, and family needs
- Advocacy and support within CRCF through collaborative meetings with COs, Caseworkers, other DOC staff, and other program providers.

DIVAS SUCCESSES AND CHALLENGES

Successes:

- Open, respectful relationship with facility administration
- Facilitated a 2-hour training for all staff on trauma-informed practices
- When PREA violations are reported, we are immediately contacted by the administration to provide support for the survivor as needed

Ongoing Challenges:

- Lack of trauma-informed rules and practices undermine potential successes
- Minimal wrap-around case coordination between facility staff, DIVAS, mental health, and medical care
- DIVAS is impactful within the facility, but what is our community's response after DIVAS participants are released? Need to ensure that Coordinated Community Response is robust and ready to take over.
- External factors (e.g. ongoing DV and SV, lack of affordable housing, lack of financial assistance, lack of opportunities for those with criminal records, lack of educational (practical) opportunities, lack of substance use treatment opportunities) that contribute to recidivism.

Introductions



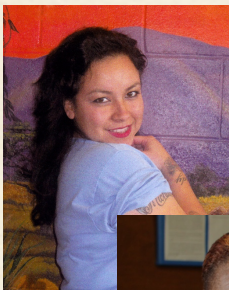
Daughters
 Mothers Self Care
 HEALING Accountability
 HOPE Tolerance
 Education
 Safety Respect JUSTICE
 Girls Empathy Community MOBILIZE

**"Without a voice there is no change.
 Silence is condoning bad behavior."**

Sisters
 Change
 TOGETHER SISTERHOOD
 Women Compassion
 Fight
 Kindness

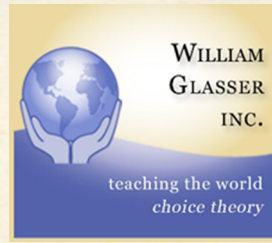
– Maribel Reister

Mobilize



Prison Rape Elimination Act
 Certified Peer Educator
Hedi (Boa) Smith W21863
Guillermo G. Garcia
 Guillermo G. Garcia, Warden
 California Institution for Women
 October 26, 2011





Punch a hole in the darkness!!
Become a **Lamplighter**, a
light of the world.





Advocate Resources

- Advocates Manual

- SART Toolkit
- Archived Webinars
- Technical Assistance Request Form
- PREA Resource Center:

prearesourcecenter.org

Advocate Resources:
www.justdetention.org/advocate-resources




For More Information

For additional information, please visit JDI's Advocate Resource page:
www.justdetention.org/advocate-resources

Direct questions to: advocate@justdetention.org

For more information about **Just Detention International**, visit
www.justdetention.org.

Connect with JDI:

 www.facebook.com/JDIonFB

 www.twitter.com/justdetention